



**SL-1**

**Single Lug - Al**

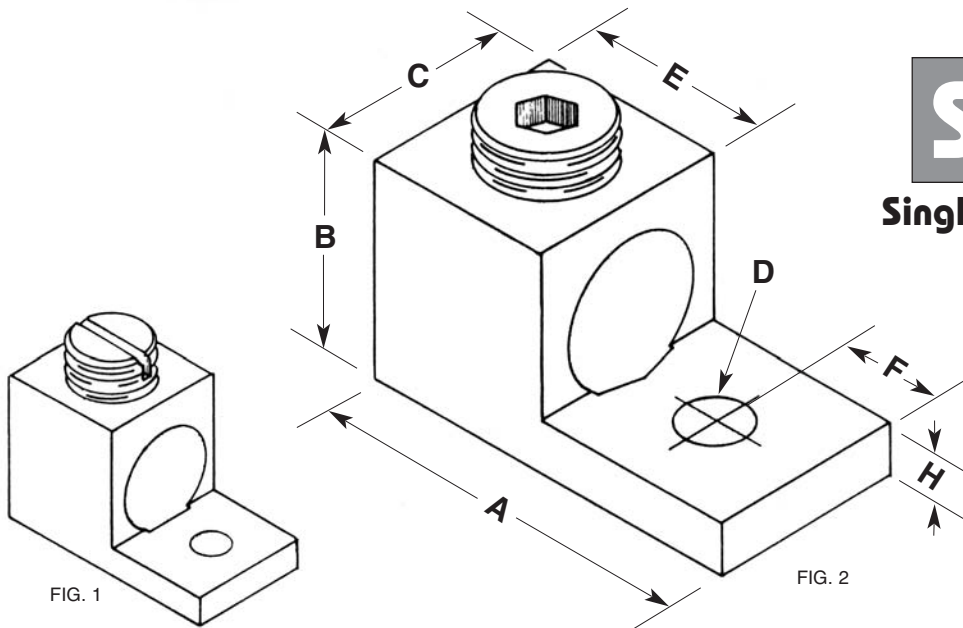


FIG. 1

FIG. 2

| CAT. NO. | FIG. | WIRE RANGE<br>CU9AL | DIMENSIONS |       |       |       |       |       |       |
|----------|------|---------------------|------------|-------|-------|-------|-------|-------|-------|
|          |      |                     | A          | B     | C     | D     | E     | F     | H     |
| 6T       | 1    | 4-14                | 0.835      | 0.5   | 0.375 | 0.193 | 0.375 | 0.25  | 0.1   |
| 4T       | 1    | 4-14                | 1.062      | 0.5   | 0.5   | 0.265 | 0.375 | 0.25  | 0.094 |
| 2T       | 1    | 2-14                | 1.156      | 0.56  | 0.5   | 0.265 | 0.47  | 0.25  | 0.1   |
| 0T       | 2    | 1/0-14              | 1.468      | 0.781 | 0.625 | 0.265 | 0.625 | 0.437 | 0.187 |
| 2/0T     | 2    | 2/0-14              | 1.468      | 0.781 | 0.625 | 0.265 | 0.625 | 0.437 | 0.187 |
| 3/0T     | 2    | 3/0-6               | 1.875      | 0.89  | 0.7   | 0.265 | 0.88  | 0.5   | 0.145 |
| 250T     | 2    | 250 MCM-6           | 2          | 1.125 | 1     | 0.328 | 1     | 0.406 | 0.25  |
| 300T     | 2    | 300 MCM-6           | 2          | 1.125 | 1     | 0.281 | 1     | 0.5   | 0.25  |
| 350T     | 2    | 350 MCM-6           | 2.25       | 1.25  | 1.125 | 0.406 | 1.125 | 0.5   | 0.25  |
| 500T     | 2    | 500 MCM-4           | 2.812      | 1.562 | 1.25  | 0.406 | 1.218 | 0.875 | 0.312 |
| 600T     | 2    | 600 MCM-2           | 3.125      | 1.562 | 1.5   | 0.531 | 1.375 | 0.875 | 0.437 |
| 800T     | 2    | 800 MCM-300 MCM     | 3.375      | 1.937 | 1.575 | 0.656 | 1.625 | 0.875 | 0.5   |
| 1000T    | 2    | 1000 MCM-500 MCM    | 3.375      | 1.937 | 1.75  | 0.656 | 1.625 | 0.875 | 0.5   |

**Material:** High Strength, High Conductive Aluminum Alloy 6061T6

**Plating:** Tin Over Copper



## SL-2

Single Lug - CU

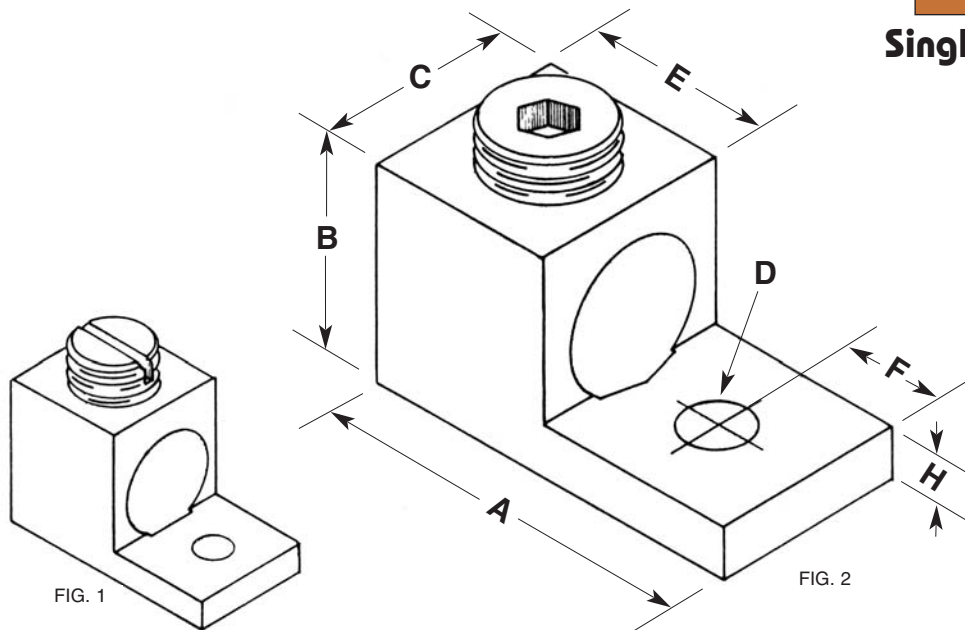


FIG. 1

FIG. 2

| CAT. NO. | FIG. | WIRE RANGE | A     | B    | C    | D    | E    | F    | H    |
|----------|------|------------|-------|------|------|------|------|------|------|
|          |      | CU         |       |      |      |      |      |      |      |
| 6TC      | 1    | 6-14       | 1.02  | .4   | .375 | .193 | .370 | .187 | .115 |
| 4TC      | 1    | 4-14       | 1.075 | .44  | .45  | .265 | .328 | .275 | .100 |
| 2TC      | 1    | 2-14       | 1.125 | .484 | .458 | .265 | .475 | .325 | .125 |
| 0TC      | 1    | 1/0-14     | 1.277 | .68  | .548 | .265 | .600 | .337 | .125 |
| 4/0TC    | 2    | 4/0-2      | 1.950 | .95  | .812 | .390 | .875 | .406 | .218 |

**Material:** High Strength, High Conductive Electrolytic Copper



**SL-3**

**Double Lug - Al**

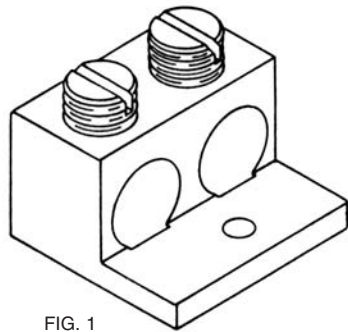


FIG. 1

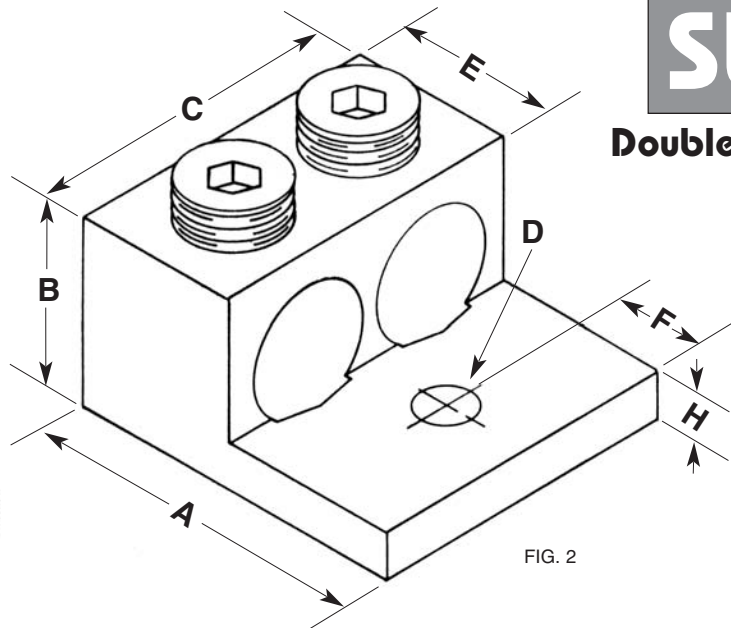


FIG. 2

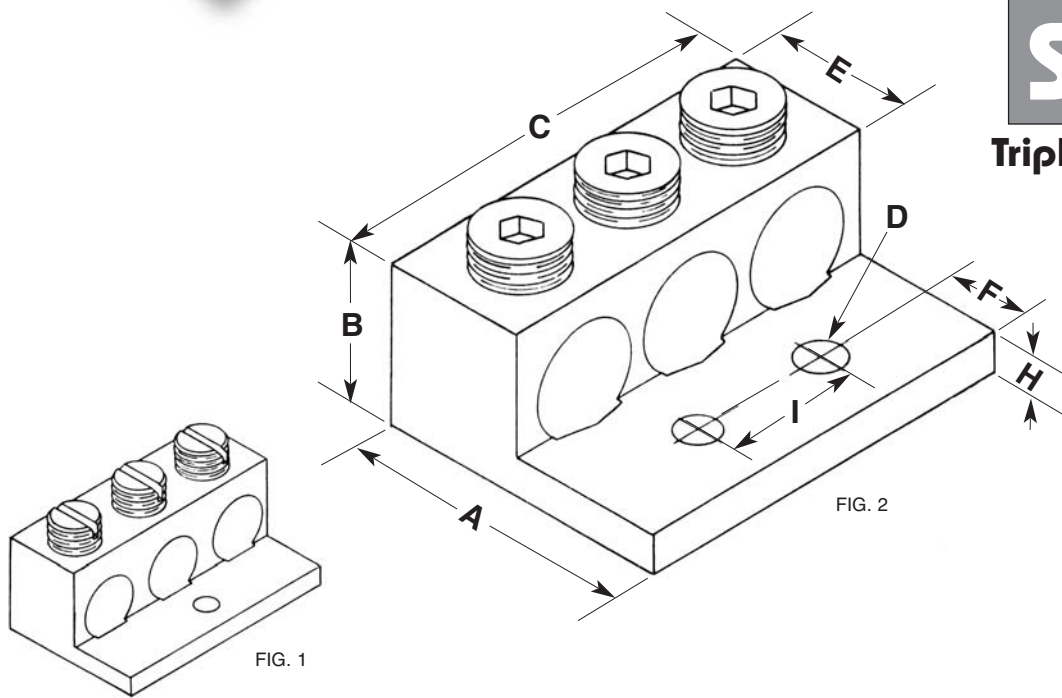
| CAT. NO. | FIG. | WIRE RANGE<br>CU9AL | DIMENSIONS |       |       |       |       |       |       |
|----------|------|---------------------|------------|-------|-------|-------|-------|-------|-------|
|          |      |                     | A          | B     | C     | D     | E     | F     | H     |
| 2-2T     | 1    | 2-14                | 1.156      | .560  | 0.906 | 0.272 | 0.470 | 0.250 | 0.100 |
| 2-0T     | 1    | 1/0-14              | 1.468      | .781  | 1.120 | 0.265 | 0.625 | 0.328 | 0.187 |
| 2-2/0T   | 1    | 2/0-14              | 1.468      | .781  | 1.120 | 0.265 | 0.625 | 0.328 | 0.187 |
| 2-3/0T   | 2    | 3/0-6               | 1.750      | .844  | 1.375 | 0.265 | 0.780 | 0.468 | 0.187 |
| 2-250T   | 2    | 250 MCM-6           | 2.562      | 1.187 | 1.625 | 0.391 | 1.000 | 0.875 | 0.250 |
| 2-350T   | 2    | 350 MCM-6           | 2.875      | 1.250 | 1.937 | 0.562 | 1.125 | 0.875 | 0.250 |
| 2-500T   | 2    | 500 MCM-4           | 2.812      | 1.562 | 2.266 | 0.562 | 1.218 | 0.875 | 0.312 |
| 2-600T   | 2    | 600 MCM-2           | 3.125      | 1.562 | 2.406 | 0.531 | 1.375 | 0.625 | 0.437 |
| 2-800T   | 2    | 800 MCM-300 MCM     | 3.375      | 1.937 | 2.925 | 0.656 | 1.625 | 0.875 | 0.500 |
| 2-1000T  | 2    | 1000 MCM-500 MCM    | 3.375      | 1.937 | 3.187 | 0.656 | 1.625 | 0.875 | 0.500 |

**Material:** High Strength, High Conductive Aluminum Alloy 6061T6

**Plating:** Tin Over Copper



**SL-4**  
 Triple Lug - Al



| CAT. NO. | FIG. | WIRE RANGE<br>CU9AL | A     | B     | C     | D     | E     | F     | H     | I     |
|----------|------|---------------------|-------|-------|-------|-------|-------|-------|-------|-------|
| 3-2T     | 1    | 2-14                | 1.156 | .560  | 1.312 | 0.272 | 0.500 | 0.250 | 0.125 | -     |
| 3-0T     | 1    | 1/0-14              | 1.468 | .781  | 1.656 | 0.265 | 0.625 | 0.437 | 0.187 | -     |
| 3-2/0T   | 1    | 2/0-14              | 1.468 | .781  | 1.844 | 0.265 | 0.625 | 0.422 | 0.187 | -     |
| 3-250T   | 2    | 250 MCM-6           | 2.562 | 1.187 | 2.406 | 0.391 | 1.000 | 0.875 | 0.250 | 1.250 |
| 3-350T   | 2    | 350 MCM-6           | 2.875 | 1.250 | 2.812 | 0.562 | 1.125 | 0.875 | 0.250 | 1.250 |
| 3-500T   | 2    | 500 MCM-4           | 2.812 | 1.562 | 3.312 | 0.562 | 1.218 | 0.875 | 0.312 | 2.000 |
| 3-600T   | 2    | 600 MCM-2           | 3.125 | 1.562 | 3.531 | 0.531 | 1.375 | 0.625 | 0.437 | 2.000 |
| 3-800T   | 2    | 800 MCM-300 MCM     | 3.375 | 1.937 | 4.625 | 0.656 | 1.625 | 0.875 | 0.500 | 2.000 |
| 3-1000T  | 2    | 1000 MCM-500 MCM    | 3.375 | 1.937 | 4.625 | 0.656 | 1.625 | 0.875 | 0.500 | 2.000 |

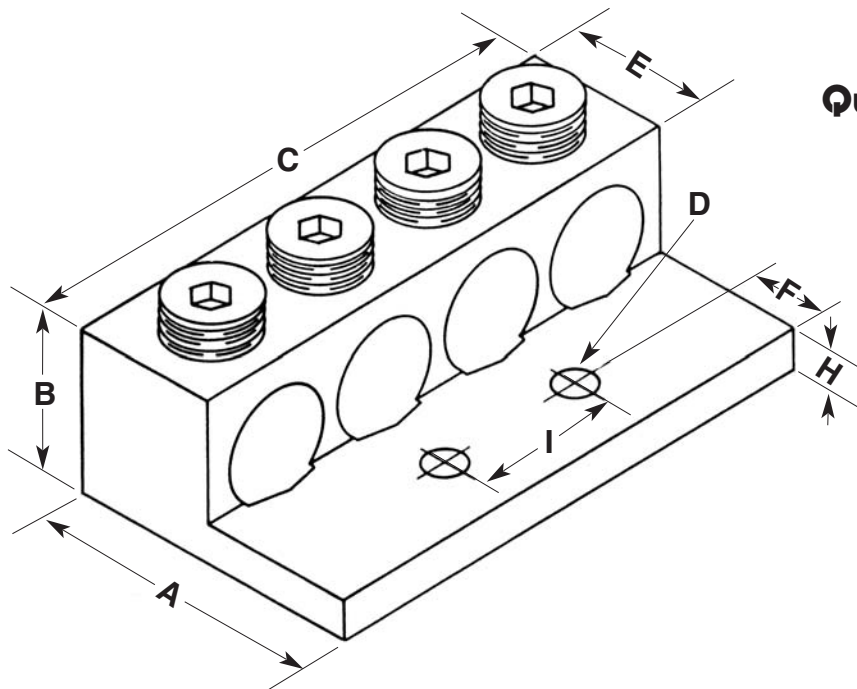
**Material:** High Strength, High Conductive Aluminum Alloy 6061T6

**Plating:** Tin Over Copper



**SL-5**

**Quadruple Lug - Al**



| CAT. NO. | WIRE RANGE<br>CU9AL | A     | B     | C     | D     | E     | F     | H     | I     |
|----------|---------------------|-------|-------|-------|-------|-------|-------|-------|-------|
| 4-250T   | 250 MCM-6           | 2.562 | 1.187 | 3.156 | 0.391 | 1.000 | 0.875 | 0.250 | 2.000 |
| 4-350T   | 350 MCM-6           | 2.875 | 1.250 | 3.718 | 0.562 | 1.125 | 0.875 | 0.250 | 2.000 |
| 4-500T   | 500 MCM-4           | 2.812 | 1.562 | 4.360 | 0.562 | 1.218 | 0.875 | 0.312 | 2.000 |
| 4-600T   | 600 MCM-2           | 3.125 | 1.562 | 4.656 | 0.531 | 1.375 | 0.625 | 0.437 | 2.000 |
| 4-800T   | 800 MCM-300 MCM     | 3.375 | 1.937 | 6.062 | 0.656 | 1.625 | 0.875 | 0.500 | 2.000 |
| 4-1000T  | 1000 MCM-500 MCM    | 3.375 | 1.937 | 6.062 | 0.656 | 1.625 | 0.875 | 0.500 | 2.000 |

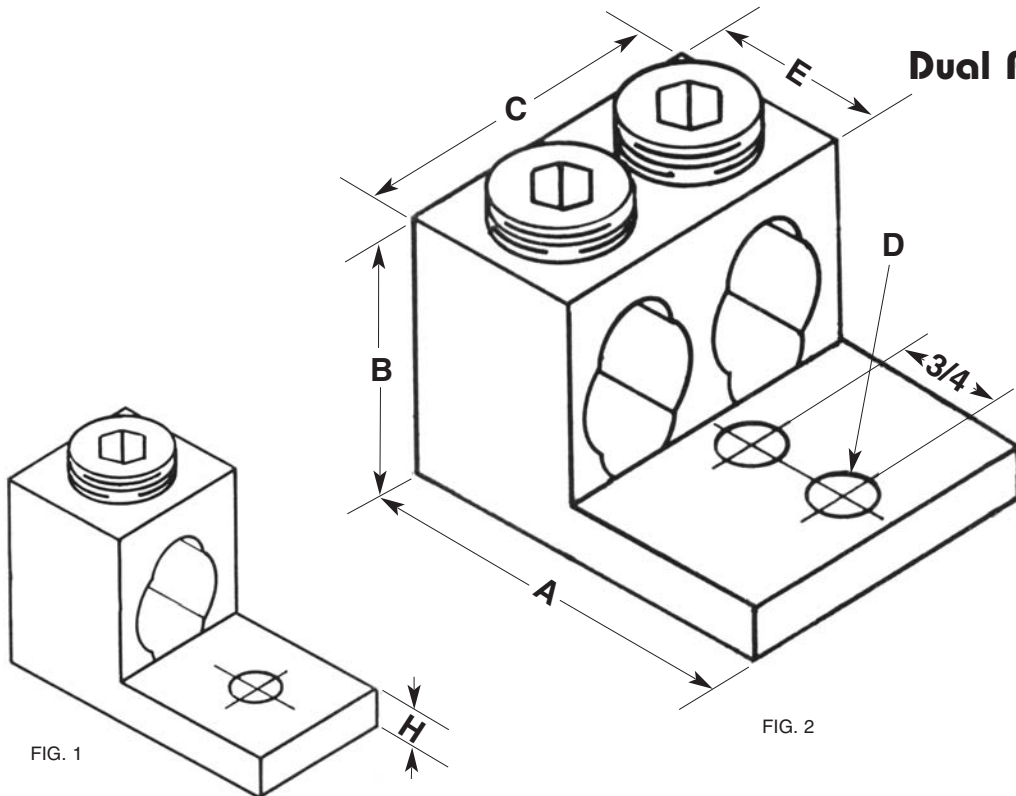
**Material:** High Strength, High Conductive Aluminum Alloy 6061T6

**Plating:** Tin Over Copper



**SL-6**

**Dual Range Lug - Al**



| CAT. NO. | FIG. | WIRE RANGE<br>CU9AL | A     | B    | C     | D     | E     | H     |
|----------|------|---------------------|-------|------|-------|-------|-------|-------|
|          |      |                     |       |      |       |       |       |       |
| BST400   | 1    | 600MCM-2            | 2.81  | 1.81 | 1.38  | 0.625 | 1.31  | 0.312 |
|          |      | (2)250MCM-1/0       |       |      |       |       |       |       |
| 2-BST400 | 2    | 600MCM-2            | 3.812 | 2    | 2.468 | 0.281 | 1.375 | 0.375 |
|          |      | (2)250MCM-1/0       |       |      |       |       |       |       |

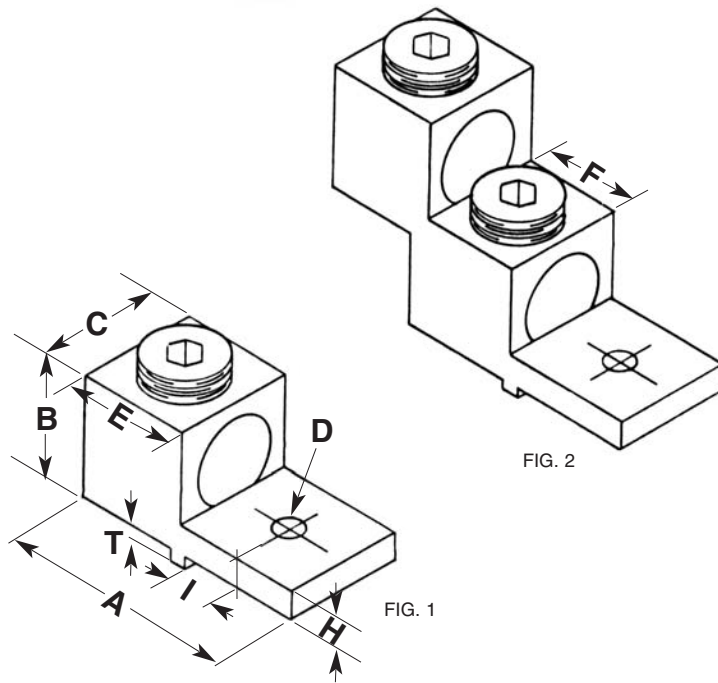
**Material:** High Strength, High Conductive Aluminum Alloy 6061T6

**Plating:** Tin Over Copper



## SL-7

**Lug with  
Turn Prevent - Al**



7850 Division Drive • Mentor, Ohio 44060 • Tel. 440-974-2622 • Fax 440-974-2624 • www.brumall.com

| CAT. NO. | FIG. | WIRE RANGE | A     | B     | C     | D     | E     | F     | H     | I     | T     |
|----------|------|------------|-------|-------|-------|-------|-------|-------|-------|-------|-------|
|          |      | CU9AL      |       |       |       |       |       |       |       |       |       |
| 2/0TP    | 1    | 2/0-14     | 1.468 | .781  | .625  | 0.265 | 0.625 | -     | 0.187 | 0.406 | 0.094 |
| 2/0TP-2  | 2    | 2/0-14     | 2.000 | 1.468 | 0.625 | 0.265 | 0.625 | 0.594 | 0.187 | 0.470 | 0.094 |
| 300TP    | 1    | 300 MCM-6  | 2.000 | 1.125 | 0.984 | 0.437 | 1.000 | -     | 0.250 | 0.492 | 0.094 |
| 300TP-2  | 2    | 300 MCM-6  | 2.750 | 2.062 | 0.875 | 0.281 | 1.000 | 0.875 | 0.250 | 0.492 | 0.094 |
| 2-300TP  | 3    | 300 MCM-6  | 2.000 | 1.125 | 1.686 | 0.406 | 1.000 | -     | 0.250 | 0.406 | 0.094 |
| 350TP    | 1    | 350 MCM-6  | 2.250 | 1.250 | 1.125 | 0.344 | 1.125 | -     | 0.250 | 0.406 | 0.094 |
| 2-350TP  | 3    | 350 MCM-6  | 2.250 | 1.250 | 1.812 | 0.406 | 1.125 | -     | 0.250 | 0.625 | 0.094 |
| 600TP    | 1    | 600 MCM-2  | 3.125 | 1.562 | 1.500 | 0.531 | 1.375 | -     | 0.437 | 0.625 | 0.125 |
| 2-600TP  | 3    | 600 MCM-2  | 3.125 | 1.562 | 2.406 | 0.531 | 1.375 | -     | 0.437 | 0.625 | 0.125 |

**Material:** High Strength, High Conductive Aluminum Alloy 6061T6

**Plating:** Tin Over Copper



**SL-8**

**Panelboard Lug - Al**

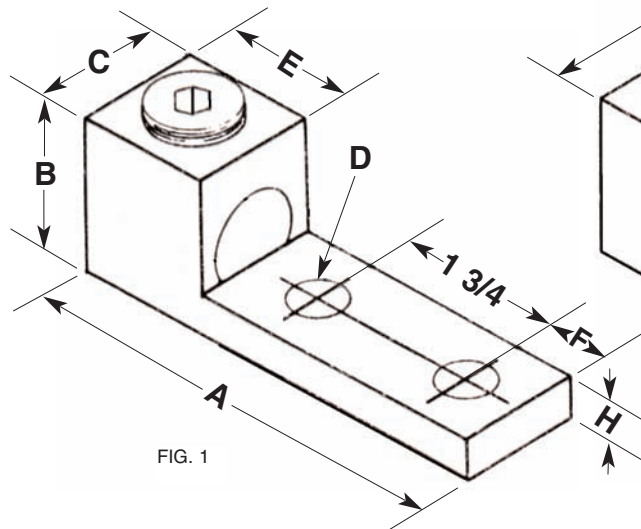


FIG. 1

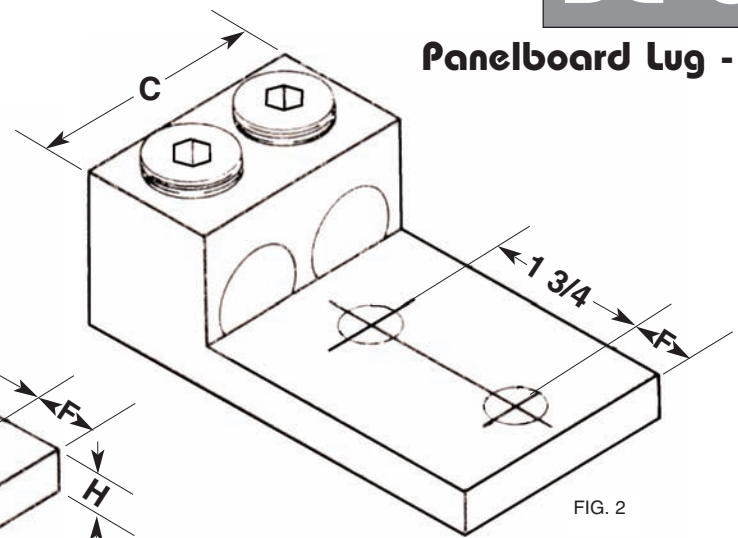


FIG. 2

| CAT. NO. | FIG. | WIRE RANGE<br>CU9AL | A     | B     | C     | D     | E     | F     | H     |
|----------|------|---------------------|-------|-------|-------|-------|-------|-------|-------|
| 2/0L2    | 1    | 2/0-14              | 3.875 | 1.125 | 0.750 | .265  | 0.875 | 0.344 | 0.312 |
| 250L2    | 1    | 250 MCM-6           | 4.000 | 1.187 | 0.875 | 0.406 | 1.000 | 0.625 | 0.312 |
| 350L2    | 1    | 350 MCM-6           | 4.312 | 1.375 | 1.125 | 0.562 | 1.312 | 0.625 | 0.312 |
| 600L2    | 1    | 600 MCM-2           | 4.500 | 1.562 | 1.500 | 0.562 | 1.375 | 0.625 | 0.437 |
| 800L2    | 1    | 800 MCM-300 MCM     | 4.750 | 1.750 | 1.750 | 0.562 | 1.625 | 0.625 | 0.500 |
| 1000L2   | 1    | 1000 MCM-500 MCM    | 4.750 | 1.750 | 1.750 | 0.562 | 1.625 | 0.625 | 0.500 |
| 2-2/0L2  | 2    | 2/0-14              | 3.875 | 1.125 | 1.250 | .265  | 0.875 | 0.344 | 0.312 |
| 2-250L2  | 2    | 250 MCM-6           | 4.000 | 1.187 | 1.812 | 0.406 | 1.000 | 0.625 | 0.312 |
| 2-350L2  | 2    | 350 MCM-6           | 4.312 | 1.375 | 2     | 0.562 | 1.312 | 0.625 | 0.312 |
| 2-600L2  | 2    | 600 MCM-2           | 4.500 | 1.562 | 2.406 | 0.562 | 1.375 | 0.625 | 0.437 |
| 2-800L2  | 2    | 800 MCM-300 MCM     | 4.750 | 1.750 | 3.187 | 0.562 | 1.625 | 0.625 | 0.5   |
| 2-1000L2 | 2    | 1000 MCM-500 MCM    | 4.750 | 1.750 | 3.187 | 0.562 | 1.625 | 0.625 | 0.5   |

**Material:** High Strength, High Conductive Aluminum Alloy 6061T6

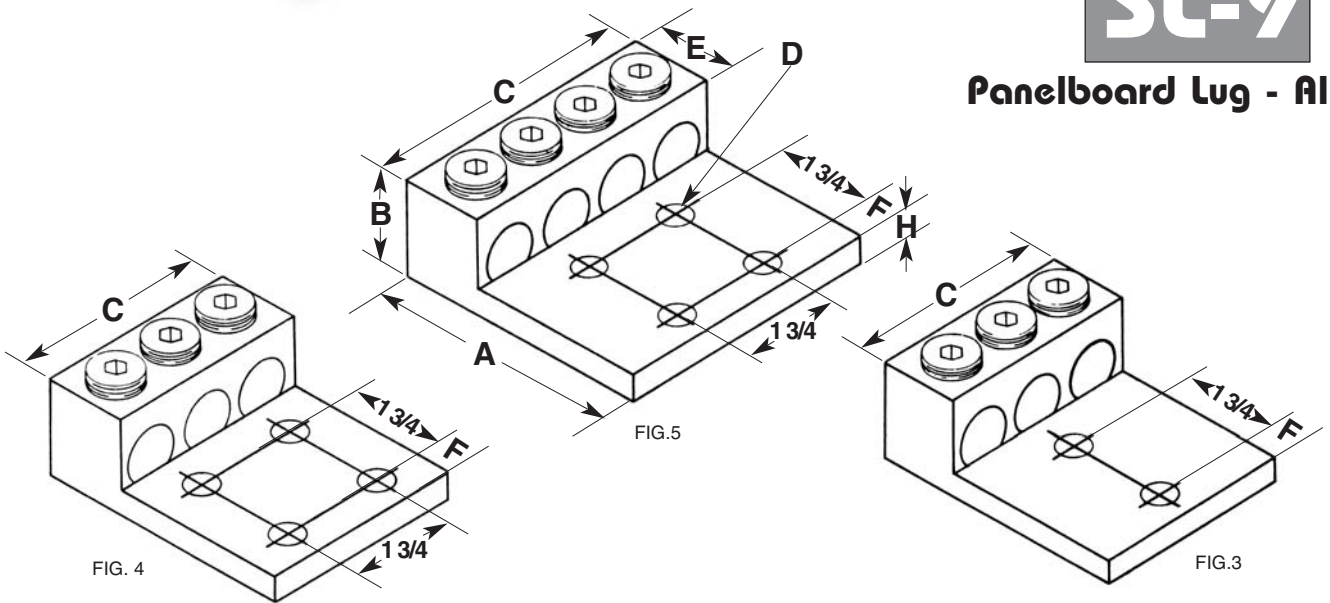
**Plating:** Tin Over Copper





**SL-9**

**Panelboard Lug - Al**



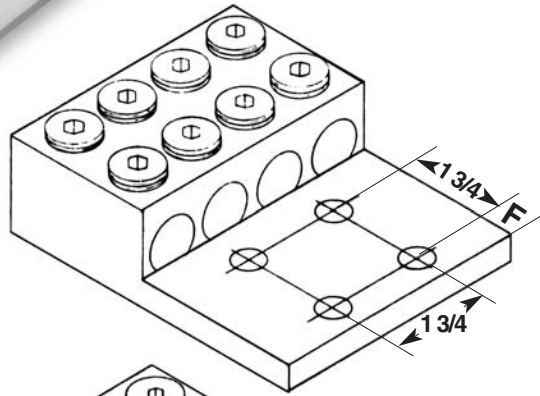
| CAT. NO. | FIG. | WIRE RANGE<br>CU9AL | DIMENSIONS |       |       |       |       |       |       |
|----------|------|---------------------|------------|-------|-------|-------|-------|-------|-------|
|          |      |                     | A          | B     | C     | D     | E     | F     | H     |
| 3-250L2  | 3    | 250 MCM-6           | 4.000      | 1.187 | 2.812 | 0.562 | 1.000 | 0.625 | 0.312 |
| 3-350L2  | 3    | 350 MCM-6           | 4.312      | 1.375 | 3.000 | 0.562 | 1.312 | 0.625 | 0.312 |
| 3-600L2  | 3    | 600 MCM-2           | 4.500      | 1.562 | 3.750 | 0.562 | 1.375 | 0.625 | 0.437 |
| 3-800L2  | 3    | 800 MCM-300 MCM     | 4.750      | 1.750 | 4.500 | 0.562 | 1.625 | 0.625 | 0.500 |
| 3-1000L2 | 3    | 1000 MCM-500 MCM    | 4.750      | 1.750 | 4.500 | 0.562 | 1.625 | 0.625 | 0.500 |
| 3-250L4  | 4    | 250 MCM-6           | 4.000      | 1.187 | 2.812 | 0.562 | 1.000 | 0.625 | 0.312 |
| 3-350L4  | 4    | 350 MCM-6           | 4.312      | 1.375 | 3     | 0.562 | 1.312 | 0.625 | 0.312 |
| 3-600L4  | 4    | 600 MCM-2           | 4.500      | 1.562 | 3.75  | 0.562 | 1.375 | 0.625 | 0.437 |
| 3-800L4  | 4    | 800 MCM-300 MCM     | 4.750      | 1.750 | 4.5   | 0.562 | 1.625 | 0.625 | 0.5   |
| 3-1000L4 | 4    | 1000 MCM-500 MCM    | 4.750      | 1.750 | 4.5   | 0.562 | 1.625 | 0.625 | 0.5   |
| 4-250L4  | 5    | 250 MCM-6           | 4.000      | 1.187 | 3.766 | 0.562 | 1.000 | 0.625 | 0.312 |
| 4-350L4  | 5    | 350 MCM-6           | 4.312      | 1.375 | 4.016 | 0.562 | 1.312 | 0.625 | 0.312 |
| 4-600L4  | 5    | 600 MCM-2           | 4.500      | 1.562 | 4.875 | 0.562 | 1.375 | 0.625 | 0.437 |
| 4-800L4  | 5    | 800 MCM-300 MCM     | 4.750      | 1.750 | 5.938 | 0.562 | 1.625 | 0.625 | 0.5   |
| 4-1000L4 | 5    | 1000 MCM-500 MCM    | 4.750      | 1.750 | 5.938 | 0.562 | 1.625 | 0.625 | 0.5   |

**Material:** High Strength, High Conductive Aluminum Alloy 6061T6

**Plating:** Tin Over Copper



FIG. 4



**SL-10**

**Panelboard Lug - Al**

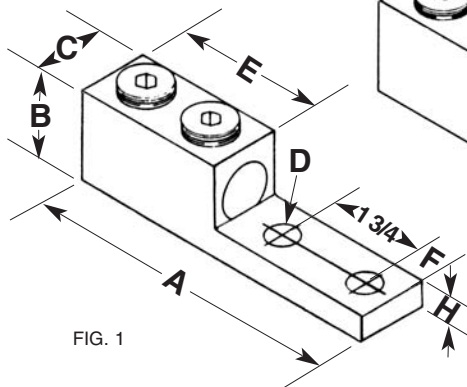


FIG. 1

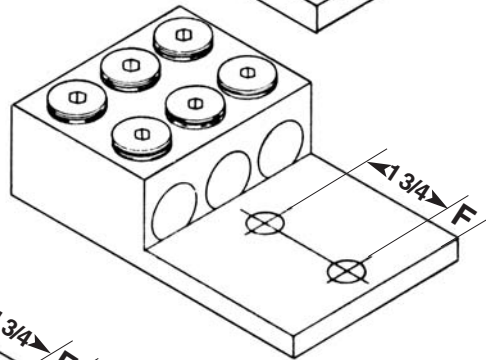


FIG. 2

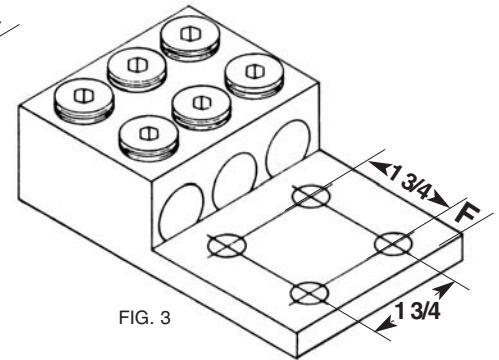


FIG. 3

| CAT. NO.  | FIG. | WIRE RANGE<br>CU9AL | DIMENSIONS |       |       |       |       |       |       |
|-----------|------|---------------------|------------|-------|-------|-------|-------|-------|-------|
|           |      |                     | A          | B     | C     | D     | E     | F     | H     |
| 800LL2    | 1    | 800 MCM-300 MCM     | 6.187      | 1.875 | 1.500 | 0.562 | 2.750 | 0.625 | 0.562 |
| 1000LL2   | 1    | 1000 MCM-500 MCM    | 6.187      | 1.875 | 1.625 | 0.562 | 2.750 | 0.625 | 0.562 |
| 1500LL2   | 1    | 1500-500MCM         | 6.625      | 1.975 | 2.000 | 0.562 | 3.475 | .650  | 0.750 |
| 3-800LL2  | 2    | 800 MCM-300 MCM     | 6.187      | 1.875 | 4.250 | 0.562 | 2.750 | 0.625 | 0.562 |
| 3-1000LL2 | 2    | 1000 MCM-500 MCM    | 6.187      | 1.875 | 4.750 | 0.562 | 2.750 | 0.625 | 0.562 |
| 3-800LL4  | 3    | 800 MCM-300 MCM     | 6.187      | 1.875 | 4.250 | 0.562 | 2.750 | 0.625 | 0.562 |
| 3-1000LL4 | 3    | 1000 MCM-500 MCM    | 6.187      | 1.875 | 4.75  | 0.562 | 2.750 | 0.625 | 0.562 |
| 4-800LL4  | 4    | 800 MCM-300 MCM     | 6.187      | 1.875 | 5.656 | 0.562 | 2.750 | 0.625 | 0.562 |
| 4-1000LL4 | 4    | 1000 MCM-500 MCM    | 6.187      | 1.875 | 6.125 | 0.562 | 2.750 | 0.625 | 0.562 |

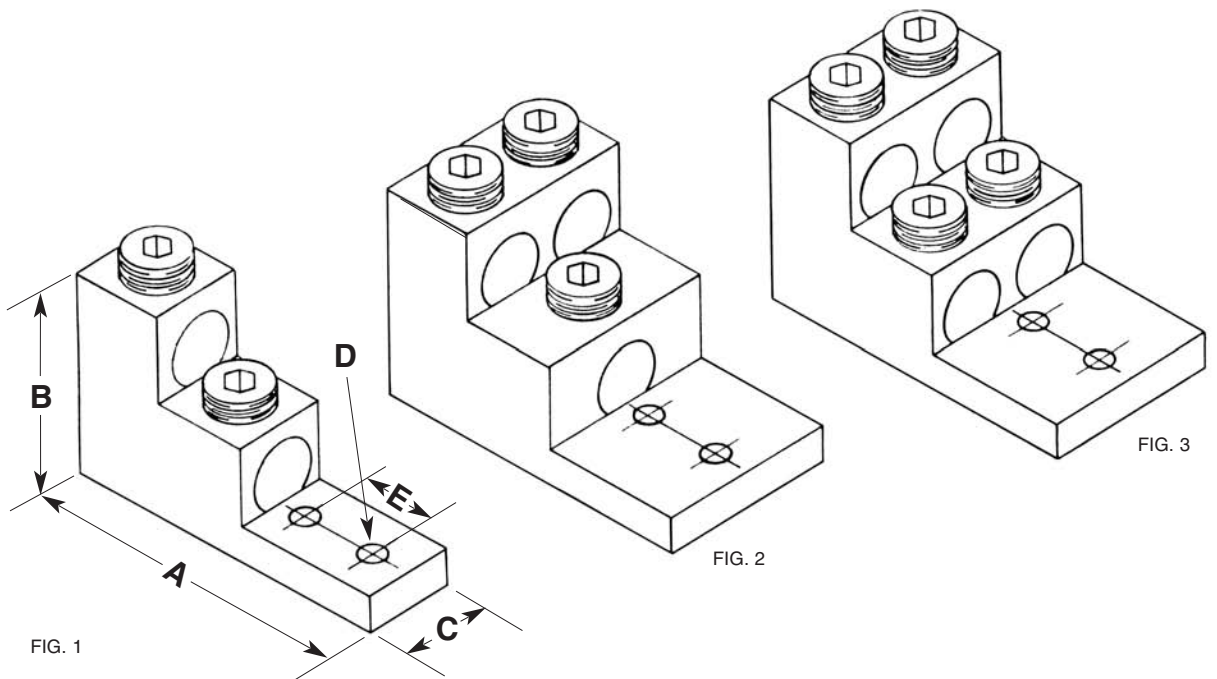
**Material:** High Strength, High Conductive Aluminum Alloy 6061T6

**Plating:** Tin Over Copper



**SL-11**

**Panelboard Lugs - Al**



| CAT. NO. | FIG. | WIRE RANGE<br>CU7AL | A     | B     | C     | D     | E     |
|----------|------|---------------------|-------|-------|-------|-------|-------|
| * 300T-2 | 1    | 300 MCM-6           | 3.000 | 2.000 | 1.000 | .328  | -     |
| * 350T-2 | 1    | 350 MCM-6           | 3.561 | 2.000 | 1.065 | .312  | .588  |
| 600T-2   | 1    | 600 MCM-2           | 5.062 | 2.903 | 1.500 | 0.406 | 1.375 |
| 600T-3   | 2    | 600 MCM-2           | 5.062 | 2.903 | 2.468 | 0.406 | 1.375 |
| 600T-4   | 3    | 600 MCM-2           | 5.062 | 2.903 | 2.468 | 0.406 | 1.375 |
| 750T-2   | 1    | 750 MCM-1/0         | 5.062 | 2.903 | 1.500 | 0.406 | 1.375 |
| 750T-3   | 2    | 750 MCM-1/0         | 5.062 | 2.903 | 2.625 | 0.406 | 1.375 |
| 750T-4   | 3    | 750 MCM-1/0         | 5.062 | 2.903 | 2.625 | 0.406 | 1.375 |
| 800T-2   | 1    | 800 MCM-300 MCM     | 4.906 | 3.000 | 1.5   | 0.406 | 1.375 |
| 800T-3   | 2    | 800 MCM-300 MCM     | 4.906 | 3.000 | 2.625 | 0.406 | 1.375 |
| 800T-4   | 3    | 800 MCM-300 MCM     | 4.906 | 3.000 | 2.625 | 0.406 | 1.375 |

**Material:** High Strength, High Conductive Aluminum Alloy 6061T6

**Plating:** Tin Over Copper

\* Wire Range CU9AL



**SL-12**  
 Splicer Reducer

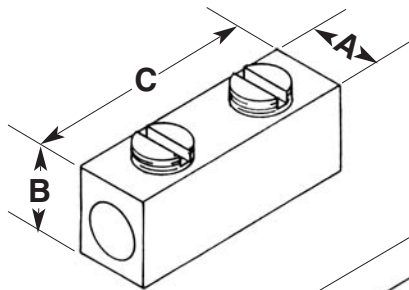


FIG. 1

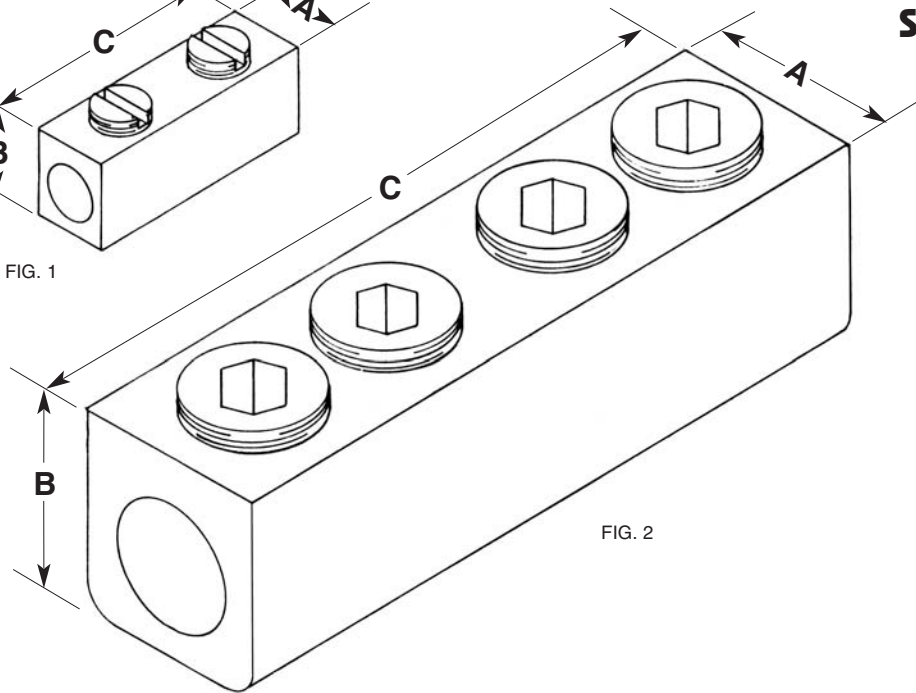
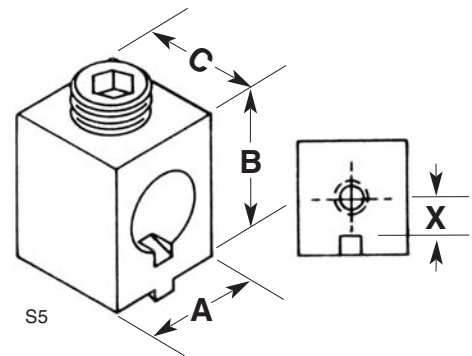
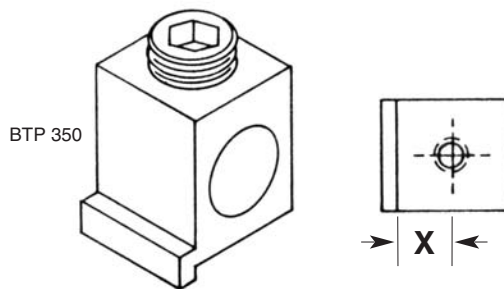
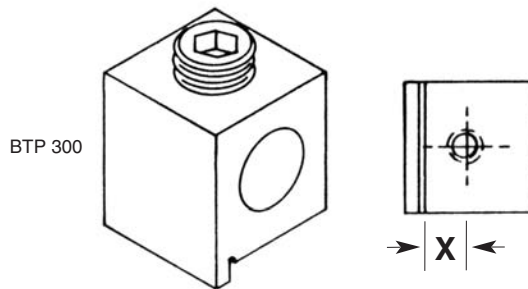
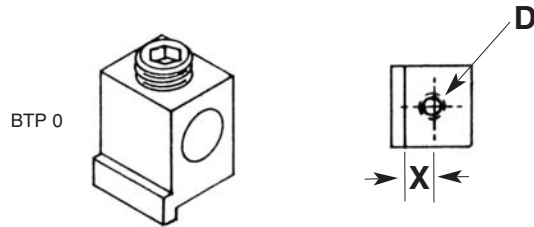


FIG. 2

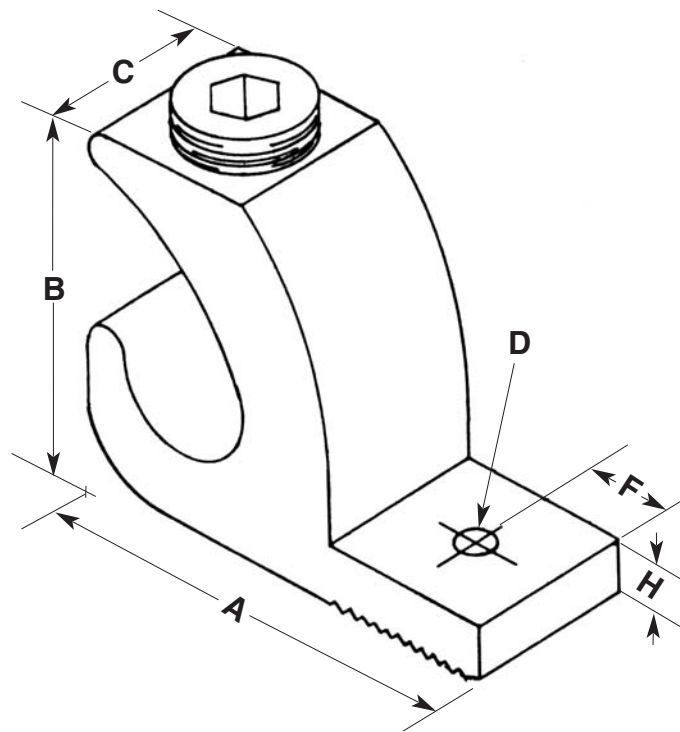
| CAT. NO. | FIG. | WIRE RANGE<br>CU9AL | A     | B     | C     |
|----------|------|---------------------|-------|-------|-------|
| 2-SR     | 1    | 2-14                | 0.443 | 0.550 | 1.594 |
| 1/0-SR   | 1    | 1/0-14              | .562  | 0.703 | 1.906 |
| 250SR-1  | 1    | 250 MCM-6           | 0.812 | 1.000 | 2.310 |
| 250-SR   | 2    | 250 MCM-6           | 0.812 | 1.000 | 4.094 |



**SL-13**

**Aluminum Box  
 Connectors with  
 "Turn Prevent"**

| CAT. NO. | WIRE RANGE<br>CU7AL | A    | B    | C    | X     | D      |
|----------|---------------------|------|------|------|-------|--------|
| BTP 0    | 0-6                 | 0.66 | 0.83 | 0.62 | 0.23  | 10-32  |
| BTP 300  | 300 MCM-6           | 0.97 | 1.16 | 0.98 | 0.385 | 1/4-20 |
| BTP 350  | 350 MCM-6           | 0.88 | 1.10 | 0.88 | 0.44  | 1/4-20 |
| S5       | 300 MCM-6           | 0.88 | 1.09 | 0.88 | 0.312 | 1/4-20 |



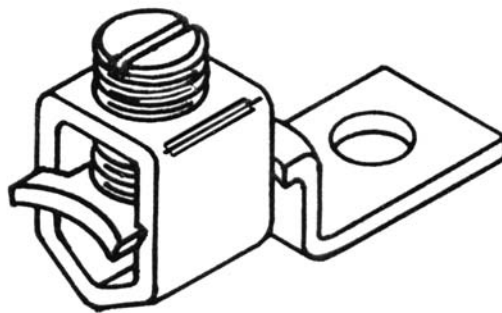
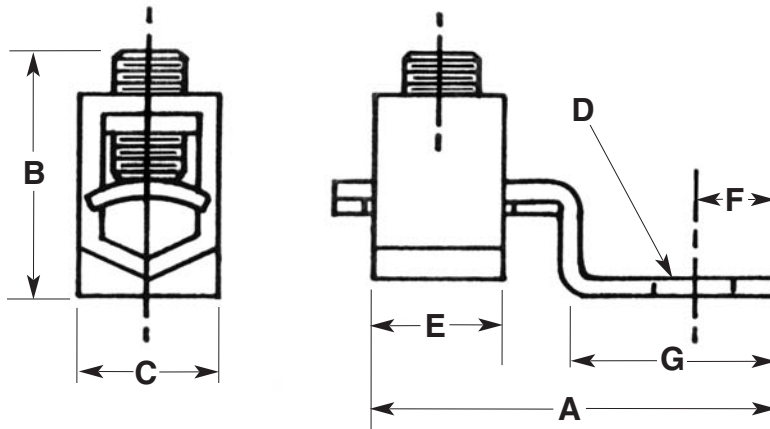
## SL-14 Lay-In Connectors

| CAT. NO. | MATERIAL | WIRE RANGE | A     | B     | C     | D     | F     | H     |
|----------|----------|------------|-------|-------|-------|-------|-------|-------|
|          |          | CU-AL      |       |       |       |       |       |       |
| GLA-4    | ALUMINUM | 4-14       | 1.07  | 0.75  | 0.38  | 0.218 | 0.19  | 0.15  |
| GLA-0    | ALUMINUM | 1/0-8      | 1.50  | 1.10  | 0.60  | 0.272 | 0.30  | 0.22  |
| GLA-000  | ALUMINUM | 3/0-6      | 2.00  | 1.50  | 0.80  | 0.330 | 0.40  | 0.3   |
| GLA-250  | ALUMINUM | 250 MCM-6  | 2.20  | 1.70  | 0.80  | 0.330 | 0.40  | 0.3   |
|          |          | WIRE RANGE |       |       |       |       |       |       |
|          |          | CU         |       |       |       |       |       |       |
| GLC-4    | COPPER   | 4-14       | 0.968 | 0.687 | 0.375 | 0.218 | 0.187 | 0.109 |



## SL-15

**Copper Lug -  
1 Mounting Hole  
Offset Tang**



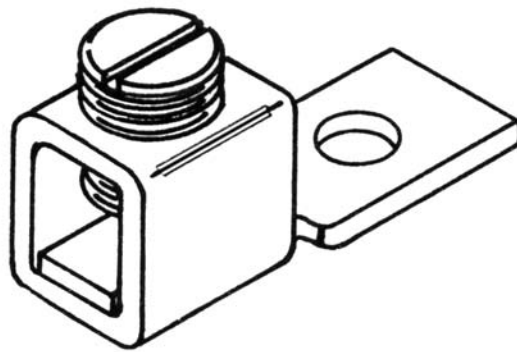
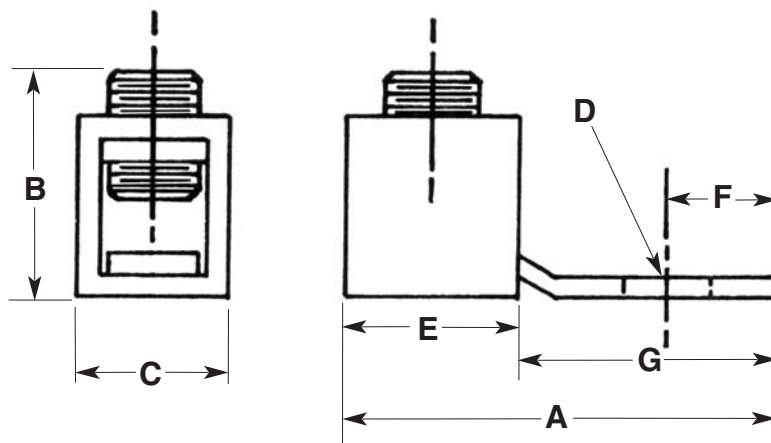
| CAT. NO. | WIRE RANGE | A     | B     | C     | D     | E     | F     | G     |
|----------|------------|-------|-------|-------|-------|-------|-------|-------|
|          | CU-AL      |       |       |       |       |       |       |       |
| C-35     | 6-14       | 1.200 | 0.884 | 0.344 | 0.205 | 0.370 | 0.234 | 0.6   |
| C-70     | 2-8        | 1.380 | 1.050 | 0.472 | 0.258 | 0.460 | 0.258 | 0.686 |

**Material:** High Strength, High Conductive Copper



## SL-16

**Copper Lug -  
1 Mounting Hole  
Straight Tang**



| CAT. NO. | WIRE RANGE<br>CU | DIMENSIONS |       |       |       |       |       |      |
|----------|------------------|------------|-------|-------|-------|-------|-------|------|
|          |                  | A          | B     | C     | D     | E     | F     | G    |
| X-6      | 6-14             | 0.995      | 0.778 | 0.345 | 0.203 | 0.375 | 0.226 | 0.61 |
| X-4      | 4-14             | 1.255      | 1.255 | 0.453 | 0.258 | 0.500 | 0.5   | 0.75 |

**Material:** High Strength, High Conductive Copper